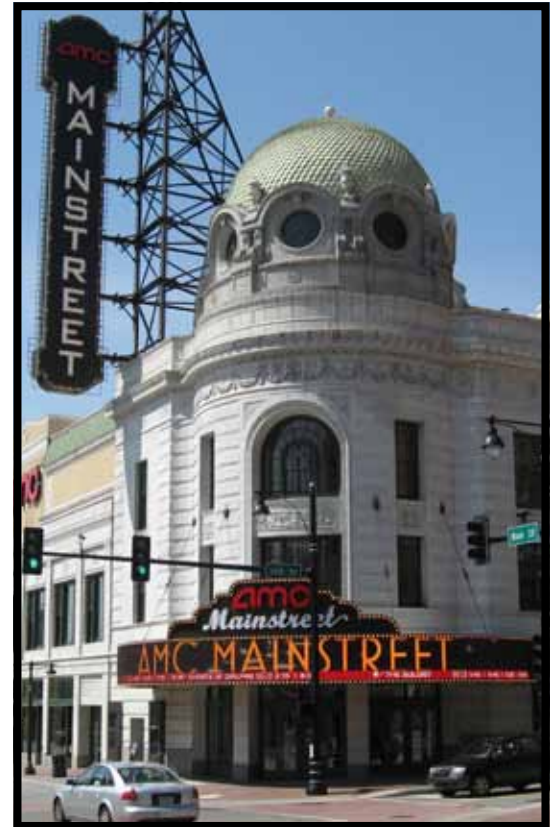
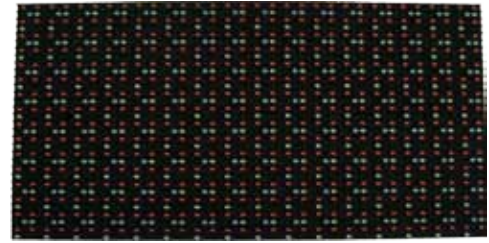




10mmE7 eVidia RGB

Specifications & Physical Characteristics

Module	10mmE7
Display Pitch	10.16mm
Display Type	High Definition RGB Video Graphics
LEDs per Physical Pixel	7
LED Enhanced Configuration	1 Red, .5 Green, & .25 Blue
Estimated Display Life	100,000 hours
Avg. Brightness @ 9300K	9,800 +/- nits
Dimming Levels	100 levels
Min. Character Height	2.9" (Based on 7 pixel high characters)
Module Pixel Configurations	16h x 32w
Module Dimensions (Approximate)	6.4" x 12.8"
Watts Per Module	44
Pixels /module	512
LEDs/sq ft	1575
Horizontal Viewing Angle	140 degrees (Physical Viewing Angles)
Vertical Viewing Angle	70 degrees up (Physical Viewing Angles)
Ventilation	Forced Air or Sealed System, using Heat Exchangers or Air Conditioning
Cabinet Material	Aluminum or Steel
Contrast Ratio	1000 to 1
Colors	4.4 Trillion RGB Colors
Communication Options	Over Copper, Fiber, or Wireless with controller inside
Refresh Rate	240 Hz
Service Access	Front, Rear, or Front & Rear
File Type Compatibility	JPG, BMP, HTML, Flash, AVI, QuickTime, MPEG, and more
Input Source Options	Standard DVI, up to 192 different inputs (configurable based on your needs and expandable as needs change); optional NTSC/PAL, S-Video, SDI, HDSDI, etc. via best-in-class external scaler/switcher hardware.
Controller Requirements	eVidia system with iOi Controller (non-proprietary and open)
Player Software	Multimedia provides standard software or clients can provide any player software of choice.



AMC Mainstreet LED Radial Canopy Kansas City

Hand Picked Diodes

We use only hand selected, top quality single bin LEDs that are color matched for each display. Each LED lot is separately selected and purchased for each display. For lasting quality, we build spare parts out of the same LED lot and store them for future use so that the LEDs will naturally color match.

High Contrast

A poly carbonate face plate material was specially developed to absorb light and reduce reflective interference caused by sunlight. This fade-resistant coating material reduces glare and provides a high contrast ratio of 1000:1.

Advanced Diagnostics

Data flow through the eVidia system is constantly monitored by a sophisticated diagnostic program. Display health, including module, power supply, and data distribution status can be monitored along with internal and external display temperature. In extreme temperatures, automatic over-temp shutdown is implemented to prevent display damage.

Color Control

eVidia systems produce true 4.4 trillion colors. The circuit designs incorporate a color correction system, which enables each module to precisely output the color combinations to match the image being produced. Color palette adjustments are sent to the modules every 30th of a second. eVidia also employs a color-specific GAMMA correction adjustment allowing both individual color brightness and non-linear color curves to guarantee exceptional color reproduction.



Time Warner Cable LED Storefront Corner Wrap NYC



Bank of America LED Storefront Corner Wrap NYC

4:4:4 RGB

We provide a compatible signal format that is universally digital, better than any other broadcast standard digital video. The true digital nature of 4:4:4 RGB color means that it is never limited to the “rules” of the NTSC or analog video broadcasts.

Energy Efficient

Power is distributed at the correct voltage for each component without the use of energy robbing resistors and inefficient linear power supplies. We also use the highest efficiency diodes available on the market.

Flexible System Compatibility

No proprietary file formats as the Multimedia LED IOI controller was designed as an open and non-proprietary system that supports both digital and analog images, compatible with any DVI input.



Sprint Instinct Billboard NYC

Feature | Benefit: Unique Louver design places the louver over each row of LEDs | Smaller Louvers mean better shading, colors and viewing angle.

Feature | Benefit: Darkest flat black surface finish | Provides amazing contrast and image clarity in conjunction with high brightness LEDs.

Feature | Benefit: No exposed hardware | Eliminates the small points of glare that can distract from the black background.

Feature | Benefit: Nichia LEDs | Power efficiency and high brightness from the industry leader and pioneer in LEDs.

Feature | Benefit: Custom molded gasket | Creates a watertight seal, ensuring a long display life and maximum up-time.

Feature | Benefit: Protective coated circuit board and potted module assembly | Protects the electronics from the elements and ensures a long display life and maximum up-time.

Feature | Benefit: Use non-conductive silicone lubricant for all connectors | Keeps water and dust out of the critical connection points.

Feature | Benefit: Molded water dam | In the unlikely event of water entry in the display, keeps the water away from the connectors.

Feature | Benefit: One power and data connector per module | Reduces maintenance time and the total cost of ownership.

Feature | Benefit: Two quarter-turn latches to efficiently remove each module | Quick service access reduces the total cost of ownership. The latches also assist in proper fit with minimal grid lines.



10mmE7 module side and rear views